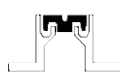
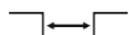




Loads
up to 600 kN



Recess
mounted



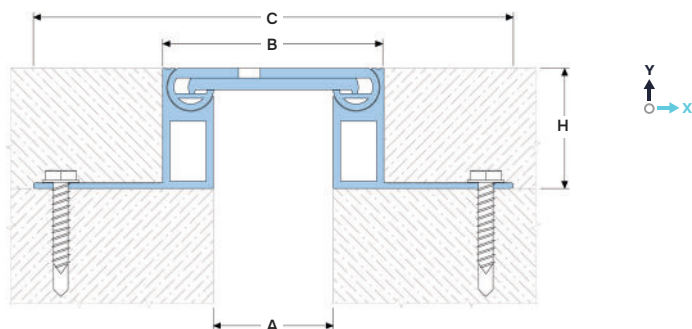
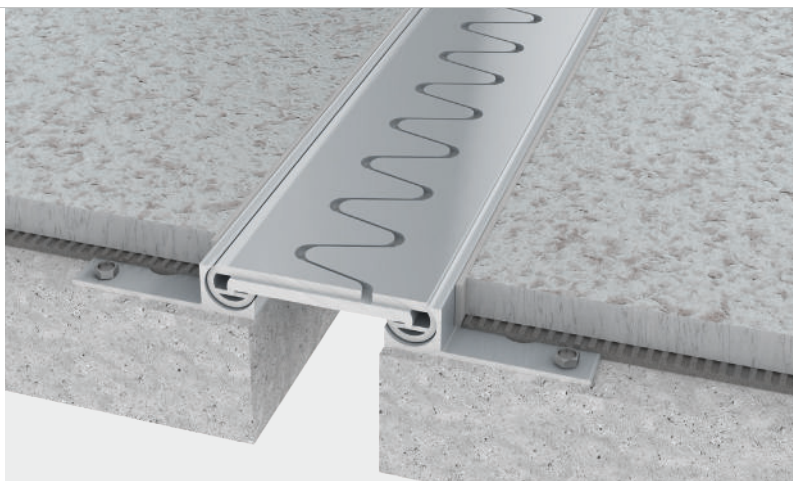
Joint width
up to 100 mm



Movements
in 3 planes



Indoor/
outdoor



DESIGNATIONS:

A – nominal joint width;

B – visible width;

C – full width (min mounting seat);

H – installation depth;

M_x – horizontal movements;

M_y – Y-axis movements.

Profile	Sizes, mm				Movements, mm		Permissible loads (kN)			
	A	B	C	H	M_x	M_y				
SV 89/50/20	50	95	210	20, 50	20 (+10/-10)	10 (+5/-5)	50	600	70	20
SV 89/100/20	100	145	210		20 (+10/-10)	10 (+5/-5)	50	300	50	10

► TECHNICAL DATA

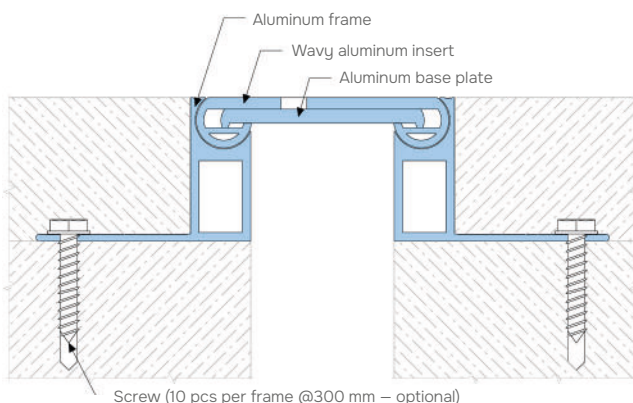
→ FRAME AND INSERT

Material	Aluminum EN AW 6063 T6 (T66 ¹)
Strength, MPa	$\sigma_b=205$ (255 ¹)
Tolerances	EN 12020-2:2008
Tooling	Mounting holes
Fasteners	Optional (Screws Rawlplug)
Surface coat	Without coating ²
Length, m	3,0

¹For EU market.

²The profile can be optionally anodized (ask for details).

► EQUIPMENT PROFILE



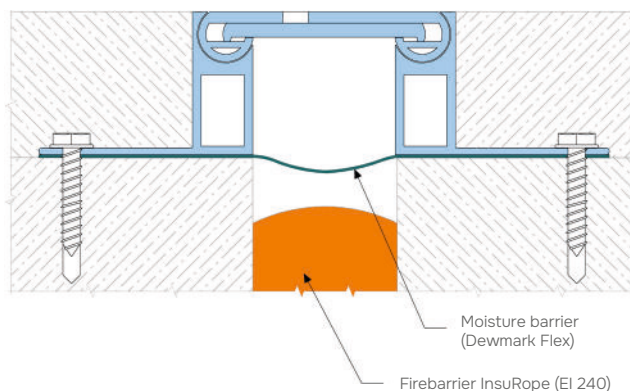
► EXECUTION OPTIONS



Using a moisture barrier for waterproofing an expansion joint.



Use of a fire barrier with a fire resistance rating of up to EI 240.



► DESCRIPTION

The profile is designed for low installation heights under heavy loads and heavy traffic. It does not put stress on the floor finish. The unique corrugated top of the profile avoids impact when the joint is moved, thereby relieving the profile of stress and reducing dynamic and vibration effects.