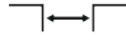




For seismic zone



Top mounted



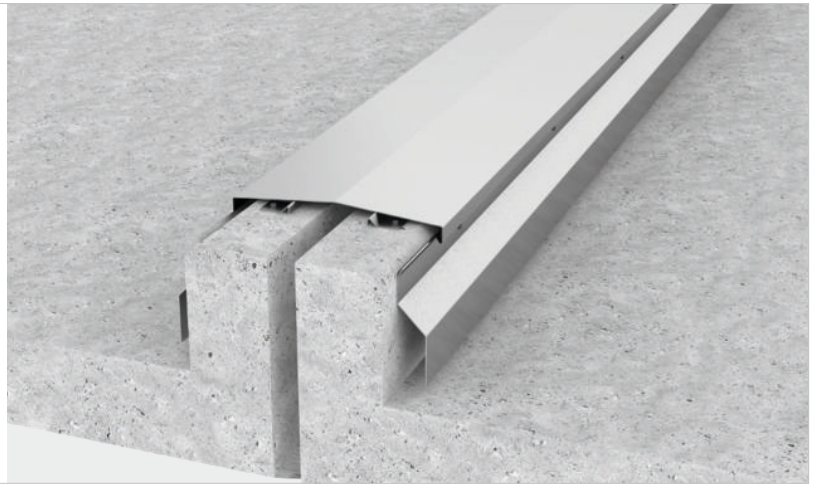
Joint width 50-500 mm



Movements in 3 directions

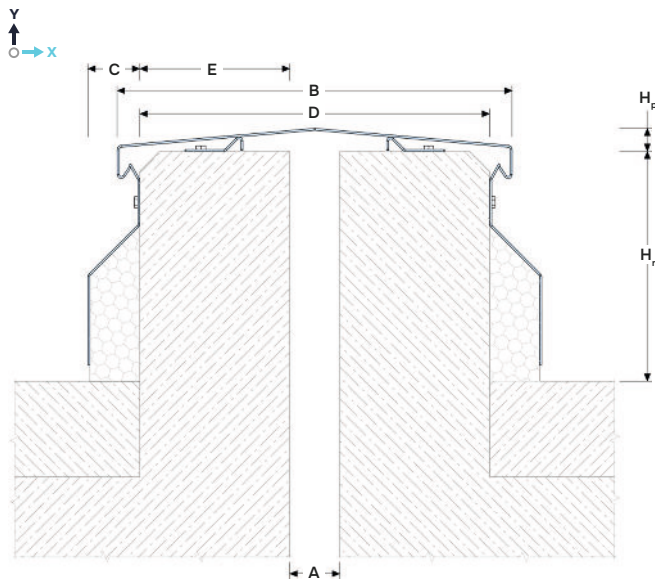


Outdoor

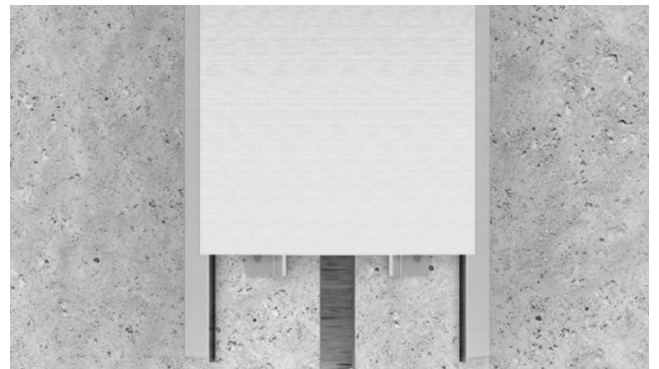
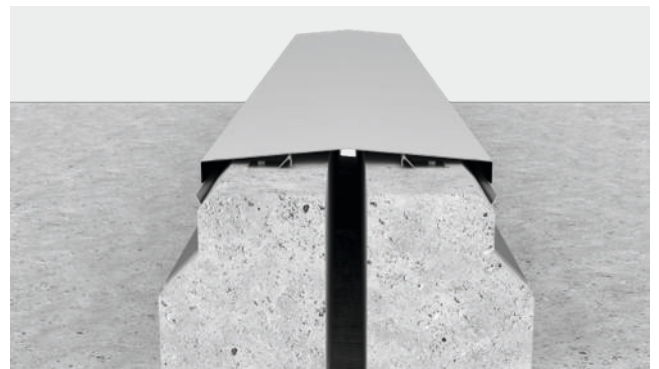


DESIGNATIONS:

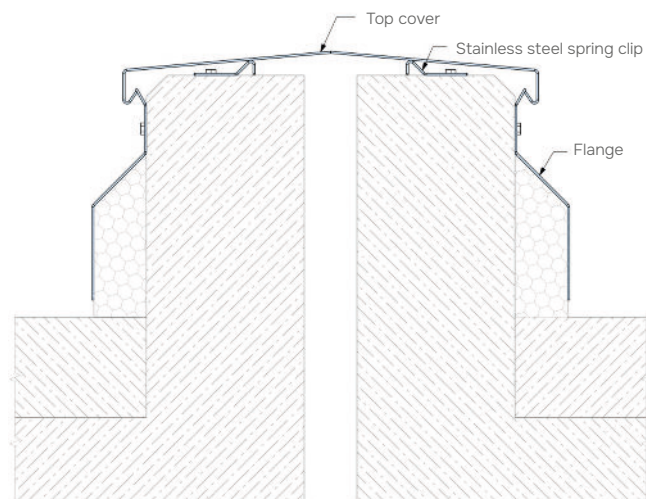
- A – nominal joint width;
- B – visible cover width;
- C – flange width;
- D – parapet full width;
- E – parapet width;
- H_p – height above parapet;
- H_r – height at the parapet;
- M_x – movements.



VIEW



EQUIPMENT PROFILE



DESCRIPTION

Dewmark Roof RV 27 is a ridge type profile and is custom made to fit the size of the roof parapet on which it will be installed. The profile cover and flanges are customisable and can be made of any material of your choice: - Aluminium - Stainless steel AISI 304, 316, etc.