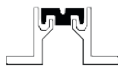
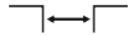




For seismic zone



Recess mounted



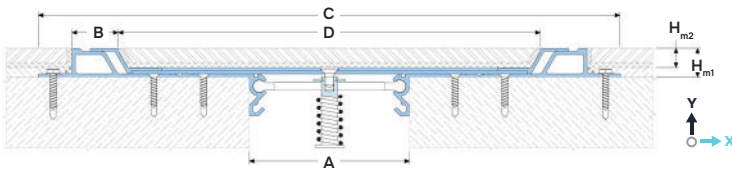
Joint width 50-250 mm



Movements in 6 planes



Indoor/
outdoor



DESIGNATIONS:

- A – nominal joint width;
- B – visible insert width;
- C – full width (min mounting seat);
- D – internal visible width;
- H_{m1} – installation height;
- H_{m2} – depth of internal frame;
- M_s – seismic movements;
- M_x – horizontal movements;
- M_y – vertical movements.

Profile	Sizes, mm						Movements, mm			Permissible loads (kN)			
	A ¹	B	C	D	H _{m1}	H _{m2}	M _s	M _x	M _y				
SV 26/50/18	50	30	315	215 ²	18	12	50 (±25) ³	24 (±12)	-5	pedestrian			
SV 26/75/18	75	30	340	240 ²	18	12	80 (±40) ³	24 (±12)	-5	pedestrian			
SV 26/100/18	100	30	365	265 ²	18	12	100 (±50) ³	24 (±12)	-7	pedestrian			
SV 26/150/18	150	30	415	315 ²	18	12	150 (±75) ³	24 (±12)	-7	pedestrian			
SV 26/200/18	200	30	465	365 ²	18	12	200 (±100) ³	24 (±12)	-7	pedestrian			
SV 26/250/18	250	30	515	415 ²	18	12	250 (±125) ³	24 (±12)	-10	pedestrian			

¹ Standard expansion joint width shown. The profile can be made to the required width from 50 to 300 mm.

² The width of the middle part can be changed to a larger side for ease of installation of the finish coat. This also changes the value of "C".

³ M_s – allowable movements occurring in the event of seismic activity.

► TECHNICAL DATA

→ PROFILE

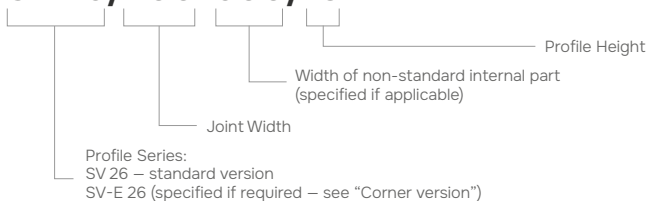
Material	Aluminum EN AW 6063 T6 (T66 ⁴)
Strength, MPa	σ _b =205 (255 ⁴)
Tolerances	EN 12020-2:2008
Tooling	Mounting holes
Fasteners	Included (Screws Rawlplug)
Surface coat	Mill finish ⁵
Length, m	3,0

⁴ For EU market

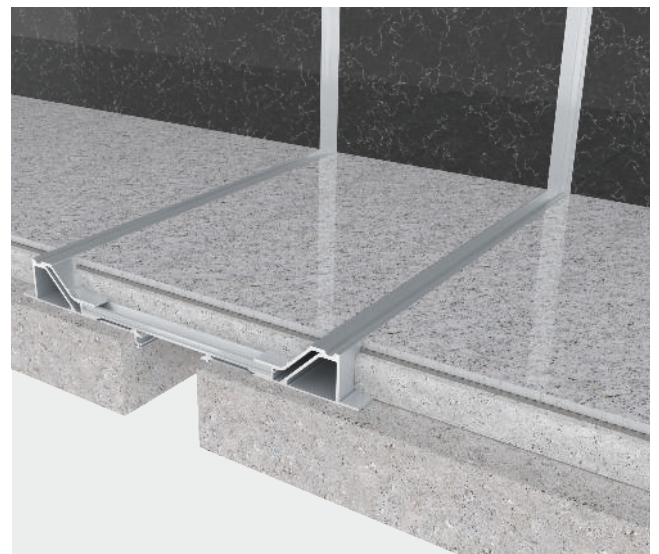
⁵ The profile can be optionally anodized (ask for details).

► LABELING

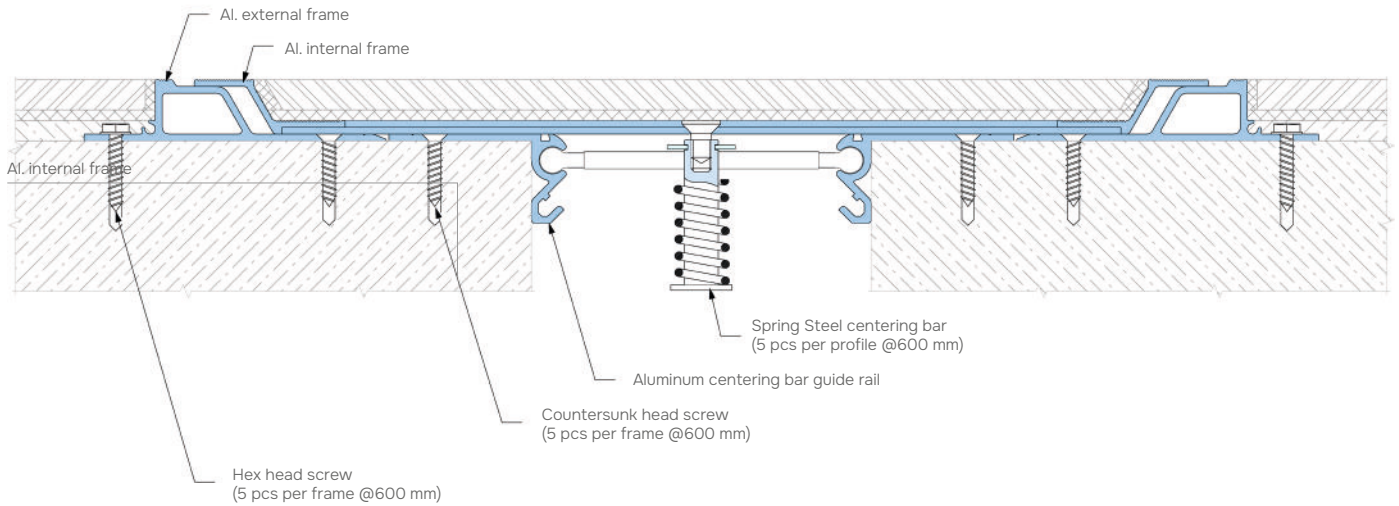
SV 26/200-600/18



► TRANSITION FROM FLOOR TO WALL

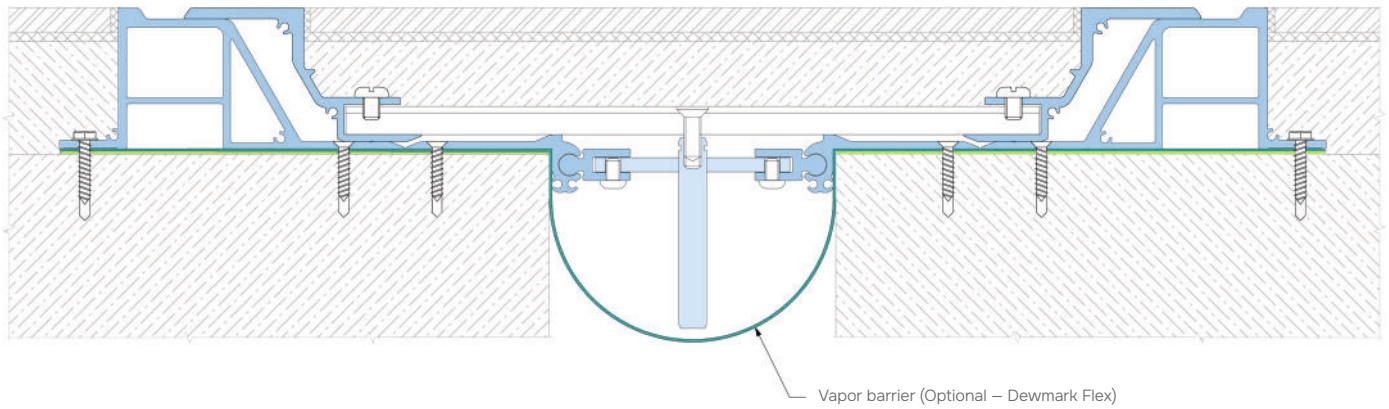


▶ EQUIPMENT PROFILE



▶ EXECUTION OPTIONS

●●
Using a vapor barrier for waterproofing an expansion joint.



●●
Use of a fire barrier with a fire resistance rating of up

