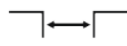




Top mounted



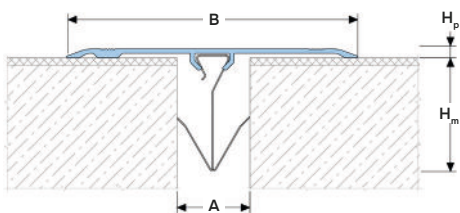
Joint width 15-80 mm



Movements in 3 directions



Indoor/outdoor



DESIGNATIONS:

A – nominal joint width;
B – visible width;
H_p – profile height;

H_m – installation depth;
M_x – horizontal movements;
M_y – Y-axis movements.

Profile	Cover type	Sizes, mm				Movements, mm	
		A ²	B	H _p	H _m	M _x ²	M _y ³
AV 13/70	AL / SS / BR	15-35	70	4	40	30 (+15/-15)	10 (+5/-5)
AV 13/70	AL / SS / BR	40-60	70	4	60	60 (+20/-40)	20 (+10/10)
AV 13/100	AL / SS / BR	15-35	100	4	40	30 (+15/-15)	10 (+5/-5)
AV 13/100	AL / SS / BR	40-80	100	4	60	80 (+20/-60)	20 (+10/10)
AV 13/120	AL / SS / BR	15-35	120	4	40	30 (+15/-15)	10 (+5/-5)
AV 13/120	AL / SS / BR	40-80	120	4	60	80 (+20/-60)	20 (+10/10)

¹ The value given is for the average nominal joint width.

² The profile is available in several finishes. See "Surface coat of cover" and "Equipment profile".

▶ TECHNICAL DATA

Material	Aluminum EN AW 6063 T6 (T66 ³)
Tolerances	EN 12020-2:2008
Strength, MPa	σ _b = 205 (250 ³)
Length, m	3,0
Tooling	–
Fasteners	Included (stainless steel spring clip)
Surface coat	For Aluminium (AL): - mill finish (MF) - matt anodized (AN) For Stainless steel (SS): - see "Equipment profile" For Brass (BR): - various brass variants (ask for details). On request: powder coated in RAL color or anodized in various colors (ask for details).

³ For EU Market

▶ LABELING

Profile Width Surface cover (see "Surface coat")

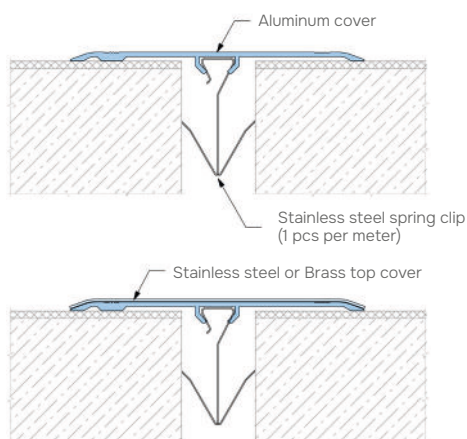
AV 13/70 (AL-XX) / S

Profile Series:
AV 13 – standard version
AV-E 13 (marked if required – see "Corner version")

Cover type

Clip type ("S" or "L")

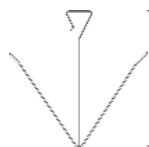
▶ EQUIPMENT PROFILE



S-clip (15-35 mm)



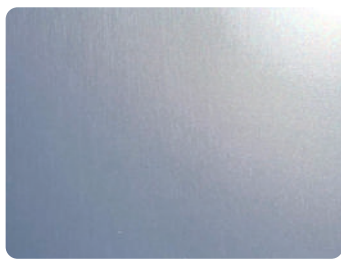
L-clip (40-80 mm)



▶ CORNER VERSION



▶ ALUMINIUM FINISHES



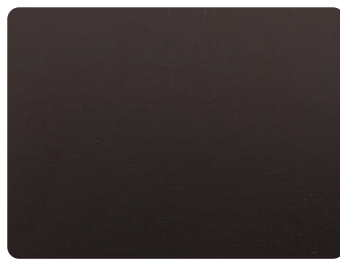
Mill Finish (MF)



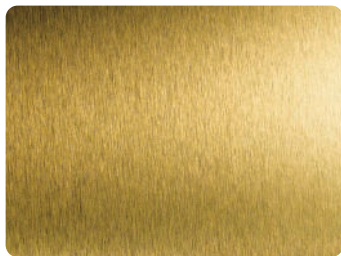
Silver (SA)



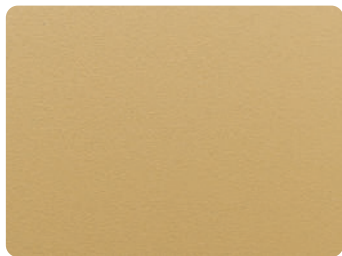
Champagne (CA)



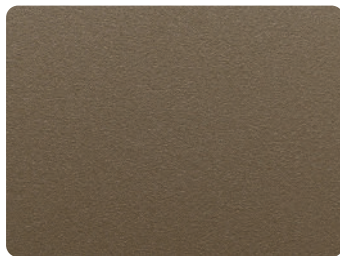
Dark Bronze (DBRA)



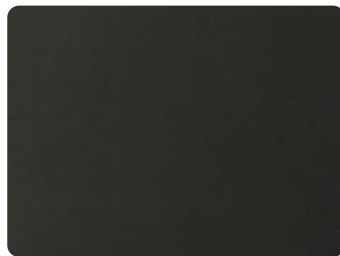
Gold (GA)



Light bronze (LBRA)



Bronze (BRA)



Black (BLA)

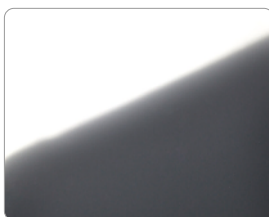


On request, it is possible to create various patterns and inscriptions on the aluminum surface by means of decorative anodizing, which increases the visual perception of the profile many times over. Please ask for more information.

▶ STAINLESS STEEL FINISHES



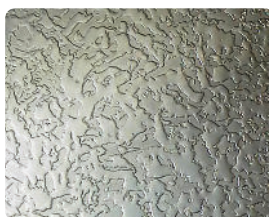
Matt (2B)



Mirror (BA)



Polish (4N)



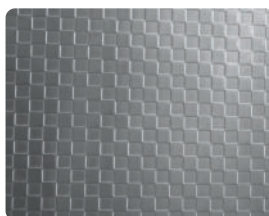
Ice



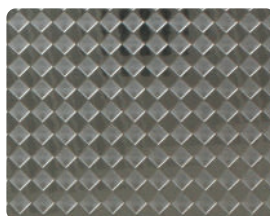
Sand



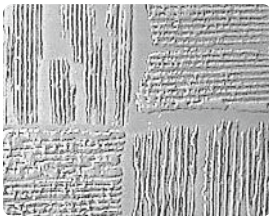
Lether



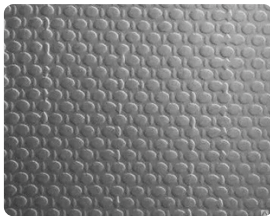
Square



Rhombus



Chessboard



Linen



Rings

▶ POWDER COATING FINISHES



Profiles can be powder coated in RAL colors, as well as painted with textured surface with inclusions of different colors. See more at dewmark-joint.com/finishes

