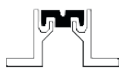


For seismic zone



Recess mounted



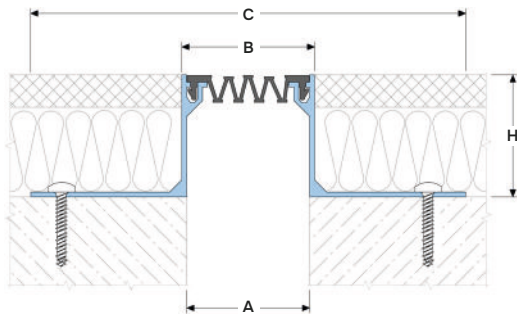
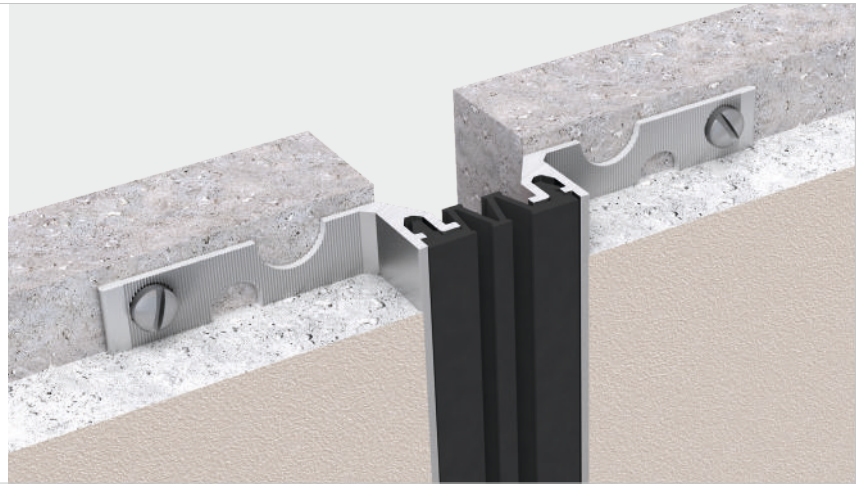
Joint width 30-300 mm



Movements in 6 planes



Indoor/outdoor



DESIGNATIONS:

- A – nominal joint width;
- B – visible width;
- C – width seat;
- H – installation height;
- M_x – horizontal movements;
- M_y – vertical movements.

Profile	Sizes, mm				Movements, mm	
	A	B	C	...=H ¹	M_x	M_y
AV 19/30/... ¹	30	34	160	15 / 20 / 30 / 50	30 (+15/-15)	30 (+15/-15)
AV 19/50/... ¹	50	54	180	15 / 20 / 30 / 50 / 70 / 80 / 100 / h ²	75 (+50/-25)	50 (+25/-25)
AV 19/80/... ¹	80	84	210	15 / 20 / 30 / 50 / 70 / 80 / 100 / h ²	130 (+80/+40)	80 (-40/-40)
AV 19/100/... ¹	100	104	230	15 / 20 / 30 / 50 / 70 / 80 / 100 / h ²	190 (+120/-70)	100 (+50/-50)
AV 19/150/... ¹	150 ³	154	280	15 / 20 / 30 / 50 / 70 / 80 / 100 / h ²	150 (+150/-120)	150 (+75/-75)
AV 19/200/... ¹	200 ³	204	330	15 / 20 / 30 / 50 / 70 / 80 / 100 / h ²	370 (+200/-170)	200 (+100/-100)
AV 19/300/... ¹	300 ³	304	430	15 / 20 / 30 / 50 / 70 / 80 / 100 / h ²	570 (+300/-270)	300 (+150/-150)

¹... – installation height to choose from standard (see H)

²Mounting height of the profile on request, where "h" is a value in mm (selectable in the range from 50 to 200 mm), designated by the AV-H index (see "execution options" #3).

³With a joint width of 150 mm or more, in the presence of any dynamic influences (including wind, rain or snow), it is recommended to use the Dewmark Wall AV 29 profiles.

▶ TECHNICAL DATA

→ **FRAME**

Material	Aluminum EN AW 6063 T6
Strength, MPa	$\sigma_b = 205$
Tolerances	EN 12020-2:2008
Length, m	3,0
Tooling	Perforated holes
Surface coat	Mill finish
Fasteners	Included

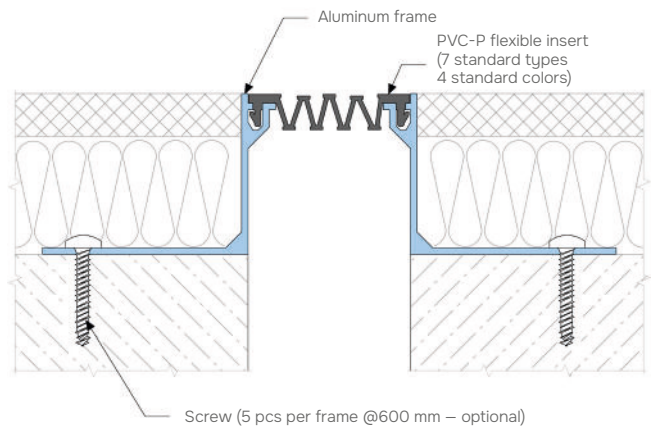
→ **FLEXIBLE INSERT⁵**

Material	PVC-P				
Resistant	-30...+100 °C, UV+O ₃ – resistant				
Length, m	20 meters per roll				
Color ⁴	<table border="1" style="display: inline-table;"> <tr> <td>9005</td> <td>7035</td> <td>7037</td> <td>1015</td> </tr> </table>	9005	7035	7037	1015
9005	7035	7037	1015		

⁴ On request, the insert can be made in any RAL color (ask for details).

⁵ On request it is possible to manufacture inserts with other geometries (see "Non-standard insert types").

▶ EQUIPMENT PROFILE



▶ LABELING (example)

Non-standard insert type (marked if required – see “Non-Standard Insert types”)

Profile height

Joint width

AV 19/50/50/7035/F

Profile Series:

AV 19 – standard version

AV-EE 19 and AV-EI 19 (marked if required – see “Corner version”)

AV-H 19 – profile height on request (marked if required - see #3)

Insert color by RAL

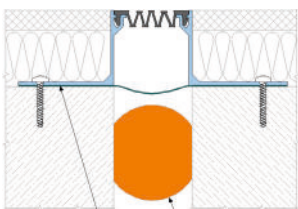
▶ EXECUTION OPTIONS



Using a moisture barrier for waterproofing an expansion joint.



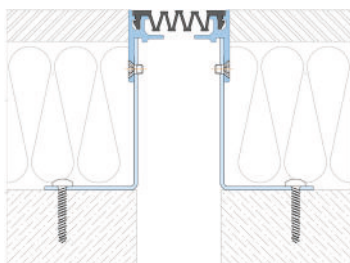
Use of a fire barrier with a fire resistance rating of up to EI 240.



Firebarrier InsuRope (EI 240)
Moisture barrier (Dewmark Flex)



The profile can be made to order for the required height from 50 to 200 mm. In this case, it is completed with an assembled frame consisting of an aluminum guide and a steel angle.



Aluminum frame for AV-H versions

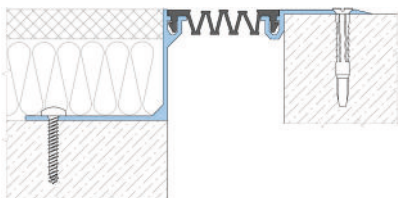


Steel angle for AV-H versions



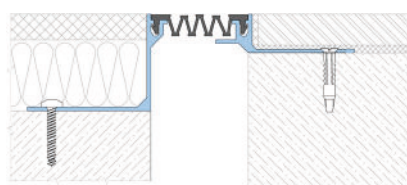
Recess - top mounted profile version (AV 19-20).

Example: AV19-20/50/50/9005



Different height version of the profile.

Example: SV19/50/50-20/9005

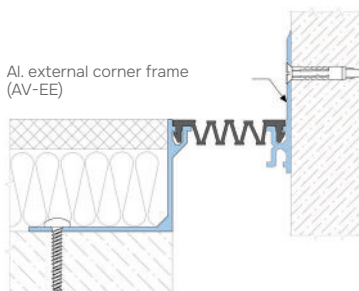


▶ CORNER VERSION

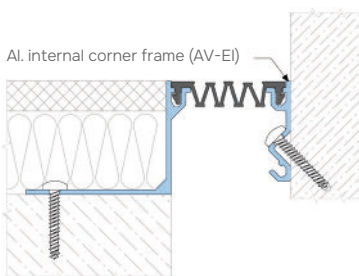


Profiles have corner versions for Floor-to-wall connections (joint along the wall). These profiles have an index:

- For external version "EE": AV-EE;
- For internal version "EI": AV-EI (only for joints with a width of 50 mm).



Example: AV-EE 19/50/50/9005

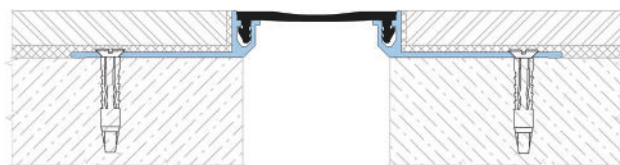


Example: AV-EE 19/50/50/9005

▶ NON-STANDARD INSERT TYPES



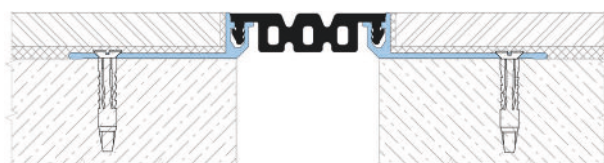
Flat insert (index "F")



NOTE! The use of a flat insert reduces the allowable profile movement (please ask for details).



To create a single contour of the visible surface of the profile during the transition of the expansion joint from the floor to the wall, it is possible to use inserts for floor profiles of the Dewmark Standart SV 21 series.



NOTE! The use of a floor type insert reduces the allowable profile movement (please ask for details).