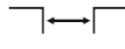




For seismic zone



Top mounted



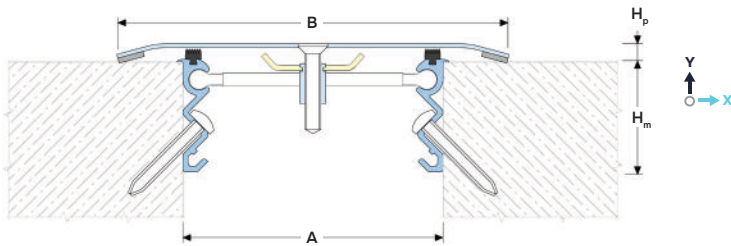
Joint width 50-1000 mm



Movements in 3 directions



Indoor/outdoor



DESIGNATIONS:

A – nominal joint width;
B – visible width;
H_p – profile height;

H_m – installation depth;
M_x – horizontal movements;
M_y – Y-axis movements.

Profile	Cover type ³	Sizes, mm				Movements, mm	
		A ¹	B ²	H _p	H _m	M _x	M _y
AV 24/50	ALE ⁴ / ALS ⁴ / SS / BR	50	70	7	42	50 (+25/-25)	10 (+5/-5)
AV 24/100	ALE ⁴ / ALS ⁴ / SS / BR	100	150	7	42	100 (+50/-50)	16 (+8/-8)
AV 24/150	ALE ⁴ / ALS ⁴ / SS / BR	150	200	7	42	150 (+75/-75)	20 (+10/-10)
AV 24/200	ALS ⁴ / SS / BR	200	250	7	42	200 (+100/-100)	26 (+13/-13)
AV 24/250	ALS ⁴ / SS / BR	250	350	7	42	250 (+125/-125)	30 (+15/-15)
AV 24/300	ALS ⁴ / SS / BR	300	450	7	42	300 (+150/-150)	36 (+18/-18)
AV 24/400	ALS ⁴ / SS / BR	400	600	7	42	400 (+200/-200)	40 (+20/-20)
AV 24/500	ALS ⁴ / SS / BR	500	750	7	42	500 (+250/-250)	50 (+25/-25)

¹ The profile can be made to order for a specific width of the expansion joint and the amount of possible movements.

² The standard width is indicated when using a profile for seismic joints with the specified limits of movement. The width of the cover can be changed on request to smaller or larger, but cannot be smaller than the joint width +20 mm.

³ The cover can be made in a choice of different materials. See "Material and Profile Designation".

⁴ ALE – continuous aluminium extrusion cover;
ALS – continuous aluminium sheet cover.

▶ TECHNICAL DATA

→ **COVER**

The profile is made to order from various materials to choose from:

Material	Aluminium	Brass	AISI 304/316
Profile designation	ALE/ALS-XXXX XXXX – RAL color	BR-XX XX – brass surface	SS304/316-XX XX – steel surface ⁵
Strength, MPa	σ _b =265	σ _b =330	σ _b =515
Tolerances	EN 1090-3	EN 1090-2	EN 1090-2
Length, m	3,0	3,0	3,0
Tooling	Mounting holes	Mounting holes	Mounting holes
Fasteners	Included	Included	Included
Surface coat	Mill finish/Anodized On request: powder coated in RAL color or anodized in various colors (ask for details).	See "Brass surface finishes"	See "Stainless steel surface finishes"

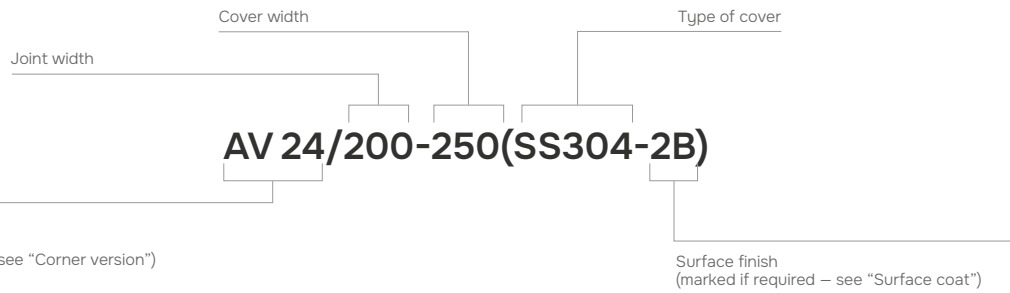
→ **FRAME**

Material	Aluminum EN AW 6063 T6 (T66 ⁵)
Tolerances	EN 12020-2:2008
Strength, MPa	σ _b =205 (250 ⁵)
Length, m	3,0
Tooling	Mounting holes
Fasteners	Included (Dowel-nail)
Surface coat	Mill finish

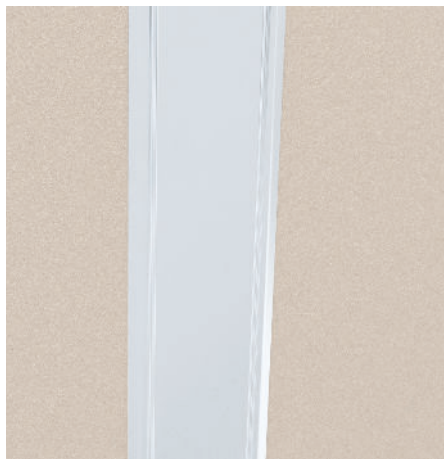
⁵ For EU Market

▶ LABELING

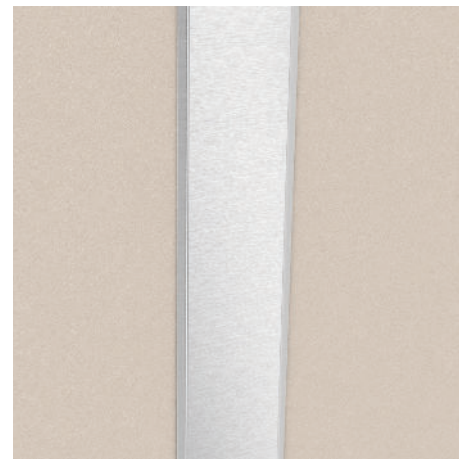
(example)



AV 24/BR

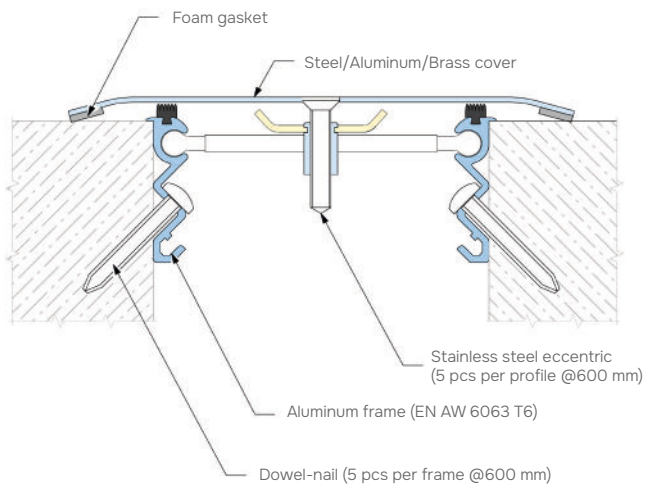


AV 24/AL



AV 24/SS

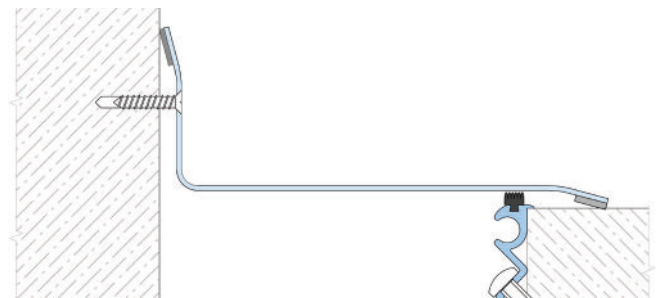
▶ EQUIPMENT PROFILE



▶ CORNER VERSION

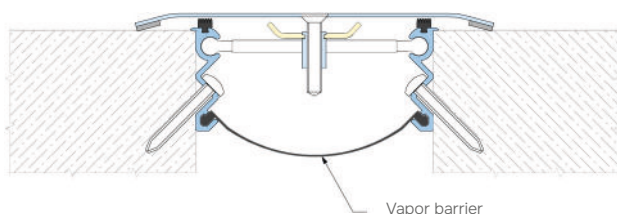
All profiles have corner versions for floor-to-wall connections (joint along the wall). These profiles have an “E” index: AV-E.

Example: AV-E 24/100-150(SS304-4N)

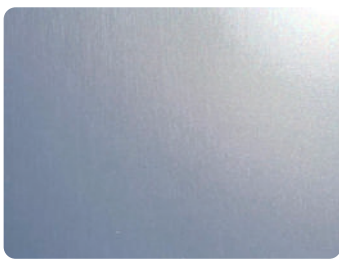


NOTE: due to the fact that the fastening takes place from inside the joint, make sure that the installers are able to carry out the fastening.

▶ OPTION



▶ ALUMINIUM FINISHES



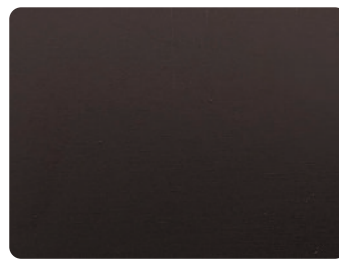
Mill Finish (MF)



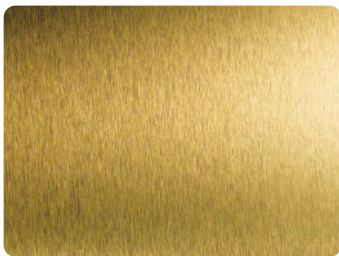
Silver (SA)



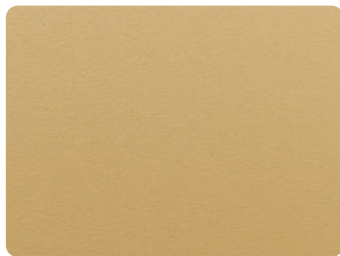
Champagne (CA)



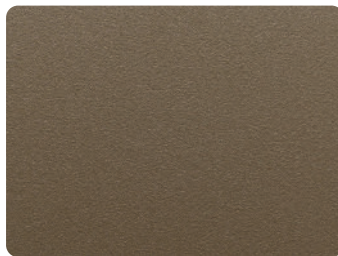
Dark Bronze (DBRA)



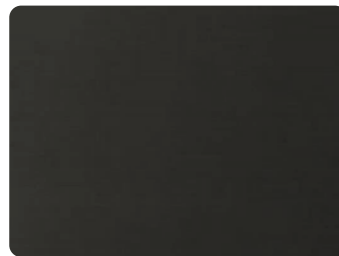
Gold (GA)



Light bronze (LBRA)



Bronze (BRA)



Black (BLA)

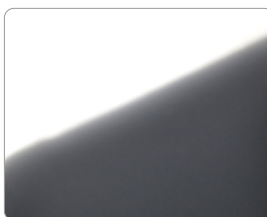


On request, it is possible to create various patterns and inscriptions on the aluminum surface by means of decorative anodizing, which increases the visual perception of the profile many times over. Please ask for more information.

▶ STAINLESS STEEL FINISHES



Matt (2B)



Mirror (BA)



Polish (4N)



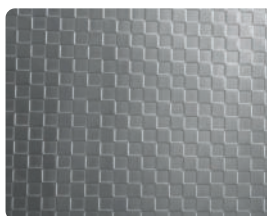
Ice



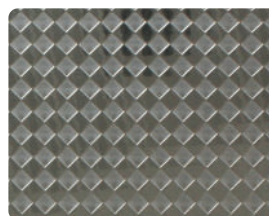
Sand



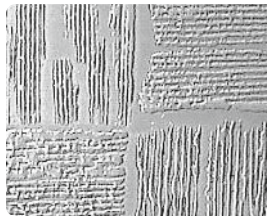
Lether



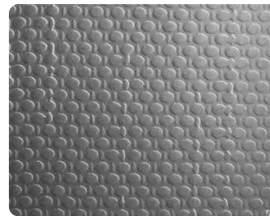
Square



Rhombus



Chessboard



Linen



Rings

▶ POWDER COATING FINISHES



Profiles can be powder coated in RAL colors, as well as painted with textured surface with inclusions of different colors. See more at dewmark-joint.com/finishes

