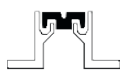
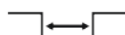




For seismic zone



Recess mounted



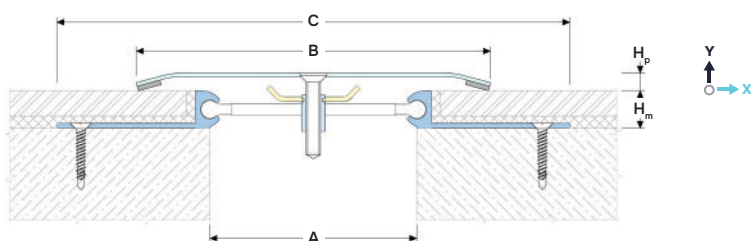
Joint width 50-1000 mm



Movements in 3 directions



Indoor/outdoor



**DESIGNATIONS:**

A – nominal joint width;  
B – visible width;  
C – min mounting seat;  
H<sub>p</sub> – profile height;

H<sub>m</sub> – installation depth;  
M<sub>x</sub> – horizontal movements;  
M<sub>y</sub> – Y-axis movements.

Profile	Cover type <sup>4</sup>	Sizes, mm				Movements, mm		
		A <sup>2</sup>	B <sup>3</sup>	C	H <sub>p</sub>	M <sub>x</sub>	M <sub>y</sub>	
AV 25/50/...	ALE <sup>5</sup> / ALS <sup>5</sup> / SS / BR	50	75	200	7	16, 20, 25, 30, 50, 70, 80, 100, 110, 120, h <sup>6</sup>	50 (+25/-25)	10 (+5/-5)
AV 25/100/...	ALE <sup>5</sup> / ALS <sup>5</sup> / SS / BR	100	150	250	7		100 (+50/-50)	16 (+8/-8)
AV 25/150/...	ALE <sup>5</sup> / ALS <sup>5</sup> / SS / BR	150	200	300	7		150 (+75/-75)	20 (+10/-10)
AV 25/200/...	ALS <sup>5</sup> / SS / BR	200	300	350	7		200 (+100/-100)	26 (+13/-13)
AV 25/250/...	ALS <sup>5</sup> / SS / BR	250	375	400	7		250 (+125/-125)	30 (+15/-15)
AV 25/300/...	ALS <sup>5</sup> / SS / BR	300	450	450	7		300 (+150/-150)	36 (+18/-18)
AV 25/400/...	ALS <sup>5</sup> / SS / BR	400	600	550	7		400 (+200/-200)	40 (+20/-20)
AV 25/500/...	ALS <sup>5</sup> / SS / BR	500	750	650	7		500 (+250/-250)	50 (+25/-25)

<sup>1</sup>... – profile height, selected from H<sub>m</sub> values.

<sup>2</sup> The profile can be made to order for a specific width of the expansion joint and the amount of possible movements.

<sup>3</sup> The standard width is indicated when using a profile for seismic joints with the specified limits of movement. The width of the cover can be changed on request to smaller or larger, but cannot be smaller than the joint width +20 mm.

<sup>4</sup> The cover can be made in a choice of different materials. See «Material and Profile Designation».

<sup>5</sup> ALE – continuous aluminium extrusion cover; ALS – continuous aluminium sheet cover.

<sup>6</sup> The profile can be made to the required mounting height, where «h» is the value in mm (from 50). In this case, the profile article has the designation AV-H (see EXECUTION OPTIONS #1). Ask for details.

## ▶ TECHNICAL DATA

### → COVER

The profile is made to order from various materials to choose from:

Material	Aluminium (5052-H34)	Brass	AISI 304/316
<b>Profile designation</b>	ALE/ALS-XXXX XXXX – RAL color	BR-XX XX – brass surface	SS304/316-XX XX – steel surface
<b>Strength, MPa</b>	σ <sub>b</sub> = 265	σ <sub>b</sub> = 330	σ <sub>b</sub> = 515
<b>Tolerances</b>	EN 1090-3	EN 1090-2	EN 1090-2
<b>Length, m</b>	3,0	3,0	3,0
<b>Tooling</b>	Mounting holes	Mounting holes	Mounting holes
<b>Fasteners</b>	Included	Included	Included
<b>Surface coat</b>	Mill finish/Anodized On request: powder coated in RAL color or anodized in various colors (ask for details).	See "Brass surface finishes"	See "Stainless steel surface finishes"

### → FRAME

<b>Material</b>	Aluminum EN AW 6063 T6 (T66 <sup>7</sup> )
<b>Tolerances</b>	EN 12020-2:2008
<b>Strength, MPa</b>	σ <sub>b</sub> = 205 (250 <sup>7</sup> )
<b>Length, m</b>	3,0
<b>Tooling</b>	Mounting holes
<b>Fasteners</b>	Included (Dowel-nail)
<b>Surface coat</b>	Mill finish

<sup>7</sup> For EU Market

▶ LABELING

(example)



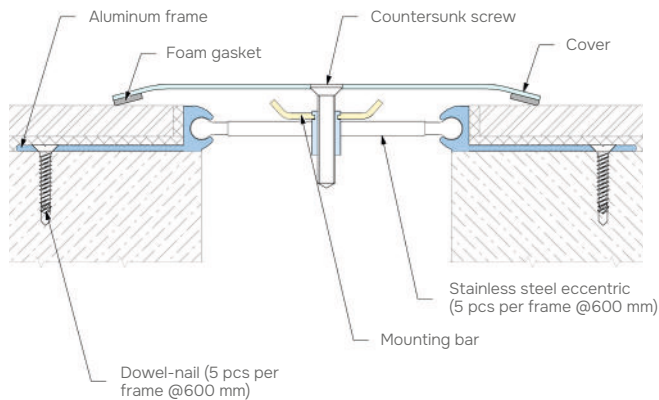
**AV 25/200-250(SS304-2B)/50**

Profile Series:

- AV 25 – standard version
- AV-E 25 (marked if required – see «Corner version»)
- AV-H 25 – profile height on request (marked if required - see Execution options #1)

Surface cover  
marked if required – see «Surface coat»

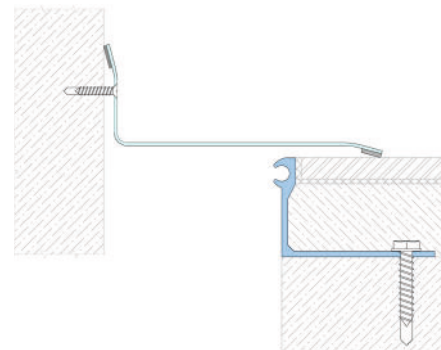
▶ EQUIPMENT PROFILE



▶ CORNER VERSION

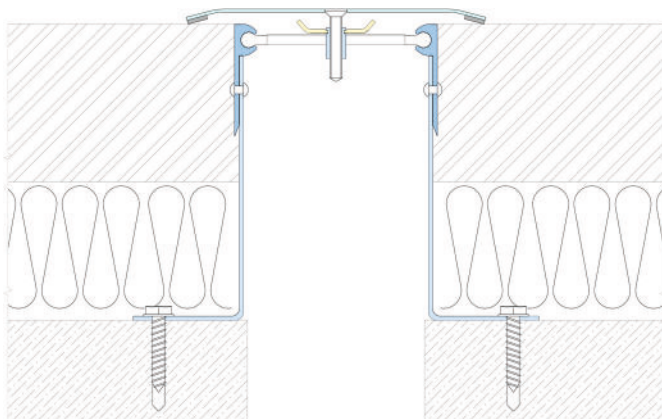
Profiles have corner versions for Floor-to-wall connections (joint along the wall). These profiles have an index «E»: SV-E

Example: AV-E 25/100-150(SS304-4N)/50

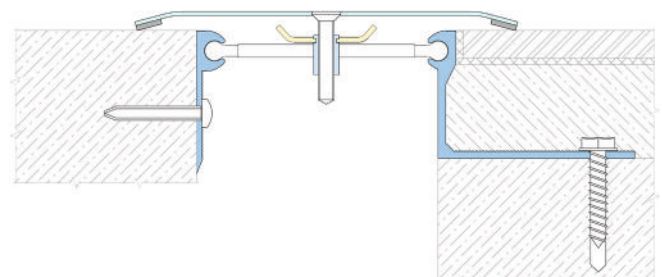


▶ EXECUTION OPTIONS

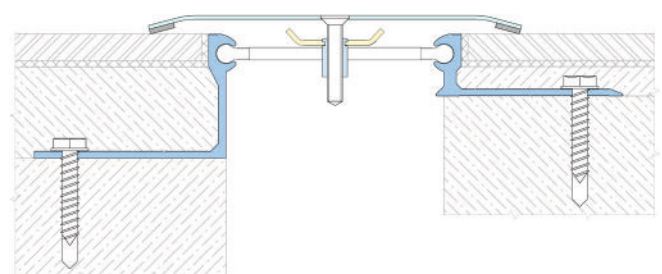
●●● The profile can be made to order for the required height from 50 to 200 mm. In this case, it is completed with an assembled frame consisting of an aluminum guide and a steel angle.



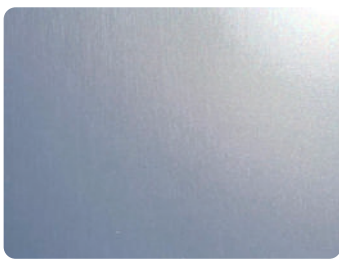
●●● Recess - top mounted profile version (AV 23-25 or AV 24-25).  
Example: AV-E 25/100-150(SS304-4N)/50



●●● Different height version of the profile.  
Example: AV 25/100-150(SS430-4N)/50-20



▶ ALUMINIUM FINISHES



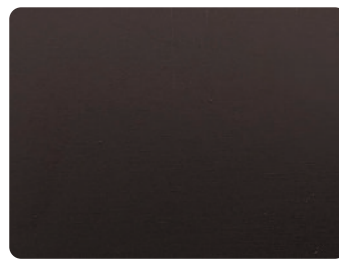
Mill Finish (MF)



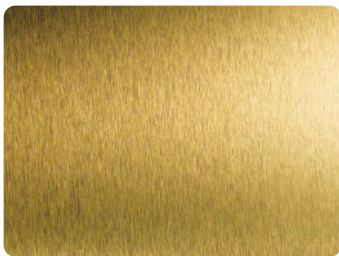
Silver (SA)



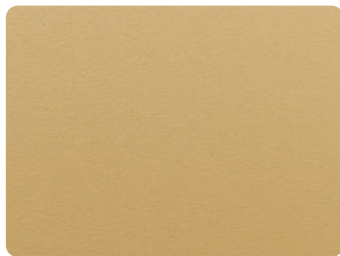
Champagne (CA)



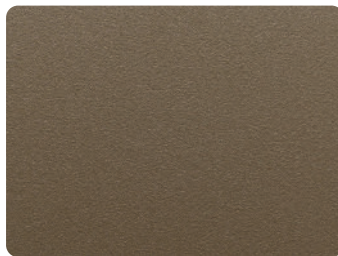
Dark Bronze (DBRA)



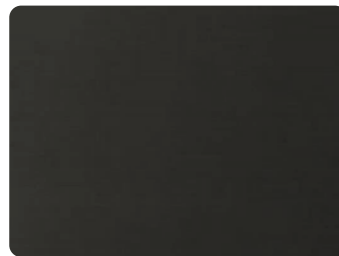
Gold (GA)



Light bronze (LBRA)



Bronze (BRA)



Black (BLA)

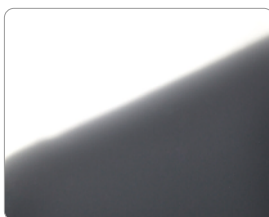


On request, it is possible to create various patterns and inscriptions on the aluminum surface by means of decorative anodizing, which increases the visual perception of the profile many times over. Please ask for more information.

▶ STAINLESS STEEL FINISHES



Matt (2B)



Mirror (BA)



Polish (4N)



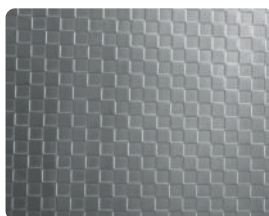
Ice



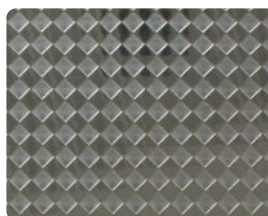
Sand



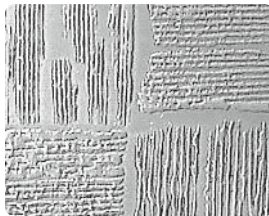
Lether



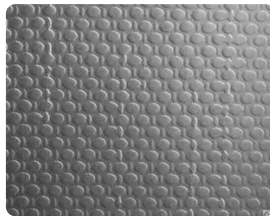
Square



Rhombus



Chessboard



Linen



Rings

▶ POWDER COATING FINISHES



Profiles can be powder coated in RAL colors, as well as painted with textured surface with inclusions of different colors. See more at [dewmark-joint.com/finishes](http://dewmark-joint.com/finishes)

