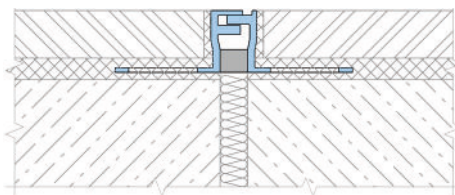
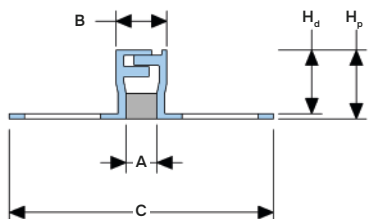




Recess
mounted



Indoor/
outdoor



DESIGNATIONS:

A – joint width; H_p – profile height;
B – visible width; H_d – mounting depth;
C – full width; M_x – horizontal movements;



Profile	A, mm	B, mm	C, mm	H _p , mm	H _d , mm	M _x , mm
CRG 32/10	6	10	52	10	9	4 (+2/-2)
CRG 32/135	6	10	52	13,5	12,5	4 (+2/-2)
CRG 32/20	6	10	52	30	19	4 (+2/-2)
CRG 32/25	6	10	52	25	24	4 (+2/-2)

▶ TECHNICAL DATA

→ **PROFILE**

Material	Aluminum EN AW 6063 T6 (T66 ¹)
Strength, MPa	σ _b =205 (255 ²)
Tolerances	EN 12020-2:2008
Tooling	Mounting holes
Fasteners	Not required
Surface coat	Mill finish ²
Length, m	3,0

¹ For EU market.

² The profile can be optionally:

- anodized (ask for details);
- powder coating (ask for details).