

Recess mounted



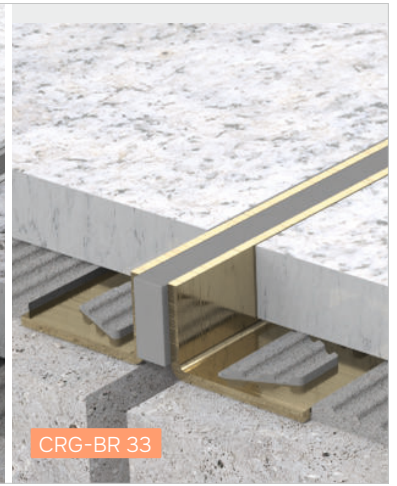
Indoor/  
outdoor



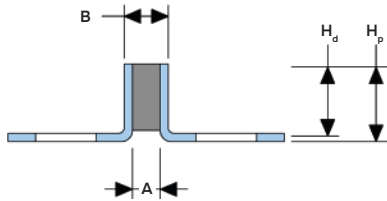
CRG-SS 33



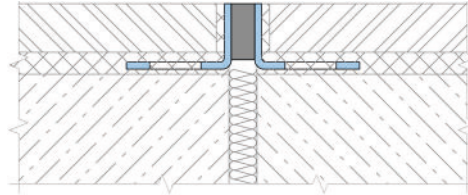
CRG-AL 33



CRG-BR 33



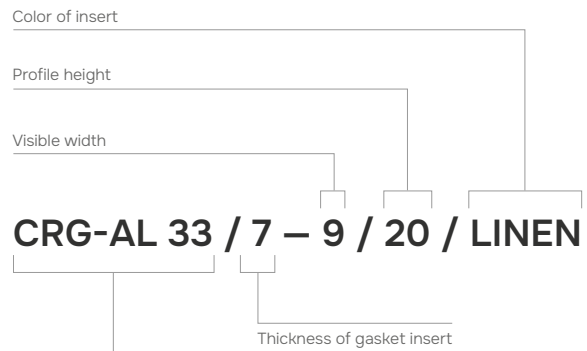
Y  
↑  
O → X



Profile	A <sup>1</sup> , mm	B <sup>2</sup> , mm	H <sub>p</sub> <sup>3</sup> , mm	H <sub>d</sub> , mm	M <sub>x</sub> , mm
CRG 33/9/8	7	9	10	9	2(+/-1)
CRG 33/9/10	7	9	13	12	2(+/-1)
CRG 33/9/125	7	9	15	14	2(+/-1)
CRG 33/9/15	7	9	18	17	2(+/-1)
CRG 33/9/175	7	9	20	19	2(+/-1)
CRG 33/9/20	7	9	22	21	2(+/-1)
CRG 33/9/22	7	9	25	24	2(+/-1)
CRG 33/9/25	7	9	30	29	2(+/-1)
CRG 33/9/30	7	9	35	34	2(+/-1)
CRG 33/9/40	7	9	40	39	2(+/-1)
CRG 33/9/50	7	9	50	49	2(+/-1)
CRG 33/9/60	7	9	60	59	2(+/-1)

<sup>1</sup>The standard thickness of the gasket insert is specified. The following thicknesses are also available: - 4, 8, 12 mm.  
<sup>2</sup> Visible width with 1 mm thickness of the guide brackets is indicated. The following thick-nesses are available: - 1.5, 2 mm.  
<sup>3</sup> The profile can be manufactured to any required height.

### ▶ LABELING



Profile Series:  
 CRG-AL 33 – aluminium version;  
 CRG-SS304/316 33 – stainless steel version (with the steel grade);  
 CRG-BR 33 – brass version.

### ▶ TECHNICAL DATA

Material of guide <sup>1</sup>	AISI 304 (1.4301)	AISI 316 (1.4401)	Aluminum 6063 or 5754	Brass
<b>Designation</b>	CRG-SS304	CRG-SS316	CRG-AL	CRG-BR
<b>Strength, MPa</b>	$\sigma_b=515$	$\sigma_b=505$	$\sigma_b=265$	$\sigma_b=330$
<b>Tooling</b>	Mounting holes			
<b>Standard length</b>	2.44 – standard (2.50 or 3.00 meters—on request)			
<b>Material of insert</b>	Neoprene			
<b>Strength, N/mm</b>	$\sigma^a=10$			
<b>Shore A</b>	55			
<b>Elongation to break</b>	>600			
<b>Resistance</b>	acid, chemical and UV: excellent			
<b>Color of insert</b>	charcoal	pewter	light grey	earth
	sandstone	alabaster	light beige	linen
				light smoke
				milky white

### ▶ CORNER VERSION

Profiles have corner versions for Floor-to-wall connections joint along the wall). These profiles have an index "E": CRG-E.  
 Example: CRG-E 33/7-9/20

