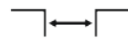




Max load
300 kN



Top
mounted



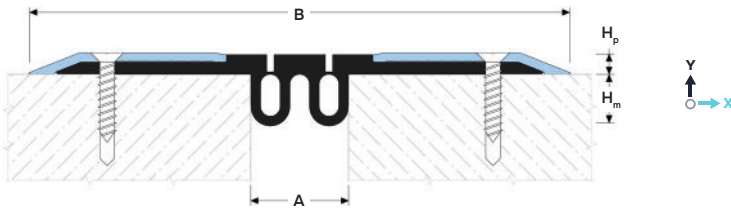
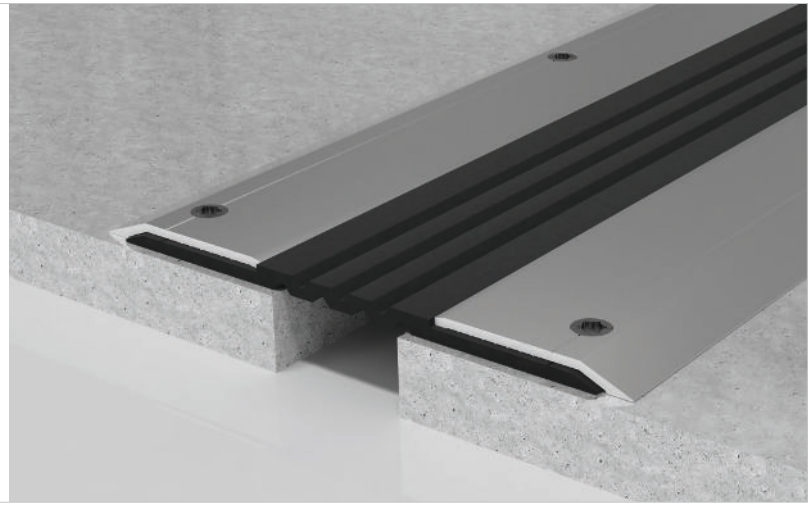
Joint width
20-100 mm



Movements
in 6 directions



Indoor/
outdoor³



DESIGNATIONS:

- A – nominal joint width;
- B – visible width;
- H_p – profile height;
- H_m – installation height;
- M_x – horizontal movements;
- M_y – vertical movements.

Profile	Type of cover ¹	Sizes, mm				Movements, mm		Permissible loads (kN)			
		A	B	H _p	H _m ²	M _x	M _y				
WR 78/20	AL / SS	20	200	8	22	20 (+10/-10)	20 (+10/-10)	50	300	70	–
WR 78/30	AL / SS	30	210	8	22	25 (+15/-10)	20 (+10/-10)	50	300	70	–
WR 78/50	AL / SS	50	230	8	22	30 (+15/-15)	20 (+10/-10)	50	300	70	–
WR 78/70	AL / SS	70	250	8	22	35 (+20/-15)	20 (+10/-10)	50	300	–	–
WR 78/100	AL / SS	100	280	8	22	40 (+20/-20)	20 (+10/-10)	50	300	–	–

¹Choice of two types of covers: extruded aluminum or stainless steel (See "Technical data").
²Profile can be equipped with a flat insert, which is not buried in the expansion joint. In this case, possible movements are reduced. Please ask for more information.
³It is not recommended to use the profile in the open sunlight and with possible large fluctuations in temperature due to the large difference in the coefficients of thermal expansion between concrete and aluminium.

► **TECHNICAL DATA**

→ **COVER**

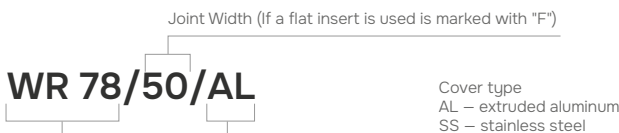
Material (2 types)	Aluminum 6063 T6 (T66 ⁶)	AISI 304 ⁴ (1.4301)
Profile designation⁴	AL	SS
Strength, MPa	σ _b =205 (250 ⁶)	σ _b =515
Tolerances	EN 12020-2:2008	EN 1090-2
Length, m	3	2,5
Tooling	Countersunk head mounting holes	
Fasteners	Included (Screws Rawlplug R-LX-5x50-CS)	

→ **INSERT**

Material	PVC-P-BV	
Profile designation⁴	-30...+100 °C, UV+O ₃ +Bitum – resistant	
Strength, MPa	20 meters per roll	
Tolerances	Black ⁵	

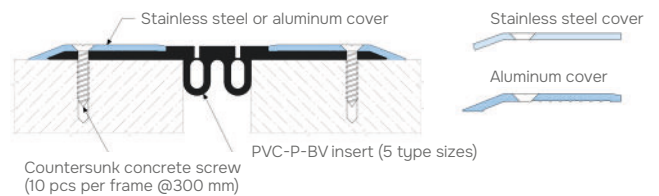
⁴On request, the cover can be made of other types of stainless steel: AISI 316, 430 or others.
⁵On request, the insert can be made in any RAL color (ask for details).
⁶For EU market.

► **LABELING**



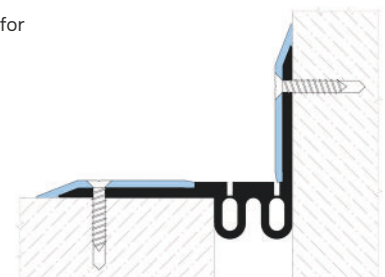
Profile Series:
 WR 77 – standard version
 WR-E 77 (marked if required – see "Corner version")

► **EQUIPMENT PROFILE**



► **CORNER VERSION**

Profiles have corner versions for Floor-to-wall connections (joint along the wall).



► **FLAT INSERT**

