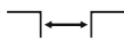




Top
mounted



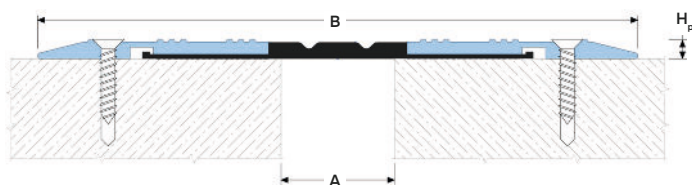
Joint width
up to 70 mm



Movements
in 6 planes



Indoor/
outdoor



DESIGNATIONS:

A – nominal joint width; H_p – profile height.
B – visible width;

Profile	Sizes, mm			Movements, mm	
	A	B	H_p	M_x	M_y
WAL 76/30	30	240	8.3	10 (+5/-5)	20 (+10/-10)
WAL 76/50	50	260	8.3	14 (+7/-7)	20 (+10/-10)
WAL 76/70	70	280	8.3	20 (+10/-10)	20 (+10/-10)

▶ TECHNICAL DATA

→ FRAME

Material	Aluminum EN AW 6063 T6 (T66 ¹)
Tolerances	EN 12020-2:2008
Strength, MPa	$\sigma_s=205$ (250 ¹)
Length, m	On request ²
Tooling	Countersunk head mounting holes
Fasteners	Included (Screws Rawlplug R-LX-5x50-CS)

→ INSERT

Material	PVC-P
Resistant	30...+100 °C, UV+O ₃ + Bitum – resistant
Length, m	20 meters per roll
Color	Black ³

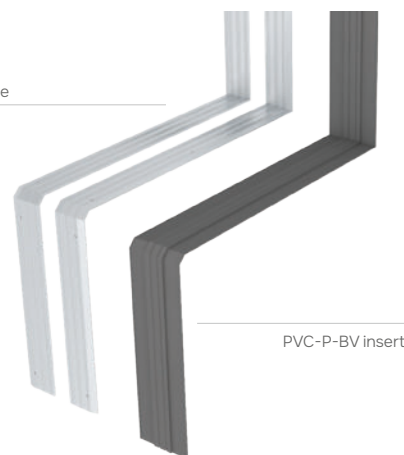
¹ For EU market.

² The profile is made to order according to the dimensions of the stadium grandstand steps.

³ On request, the insert can be made in any RAL color (ask for details).

▶ EQUIPMENT PROFILE

Aluminium frame



PVC-P-BV insert

▶ DESCRIPTION

The WAL 76 profile is manufactured to the dimensions of the stadium steps and does not require a landing⁴.

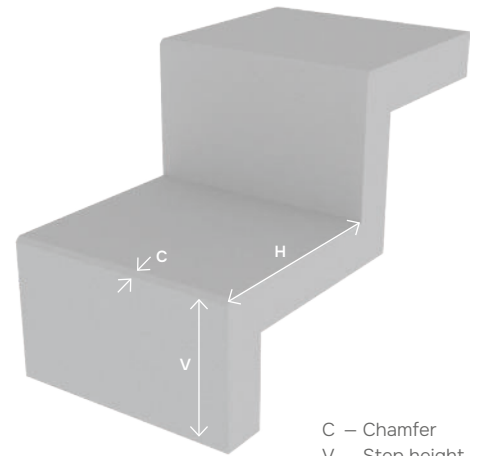
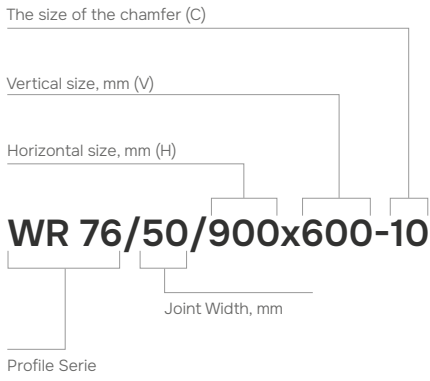
The flexible insert unwinds over the entire height of the grandstand and is pressed securely into place by the aluminum frames, thus creating a moisture-proof structure.

To create a complete waterproofing it is necessary to glue the waterproofing membrane before installing the profile.

⁴ It is not possible to fix the profile to the step without a chamfer - It is necessary to have a chamfer on the grand-stand.

▶ LABELING

(example)

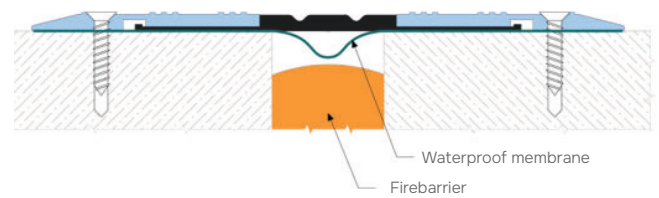


C – Chamfer
 V – Step height
 H – Step depth

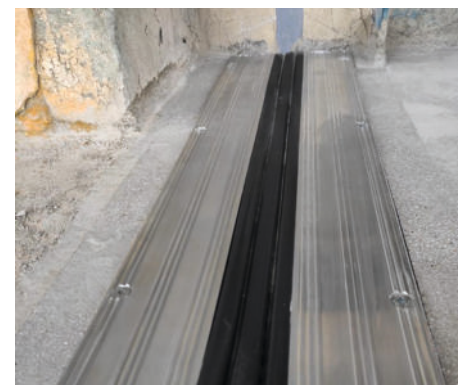
▶ OPTIONAL

●● Using a vapor barrier for waterproofing an expansion joint.

●● Use of a fire barrier with a fire resistance rating of up to EI 240.



▶ STADIUM PHOTOS



DEWMARK STADIUM

DEWMARK CONTROL

DEWMARK FLEX

DEWMARK FIREGUARD