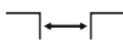




Top
mounted



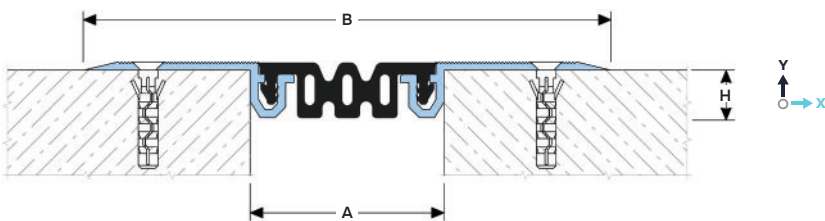
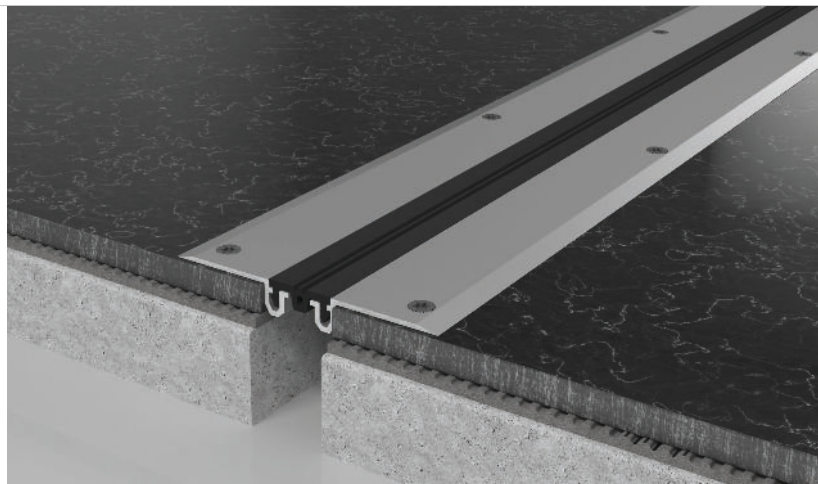
Joint width
25-100 mm



Movements
in 6 planes



Indoor/
outdoor¹



DESIGNATIONS:

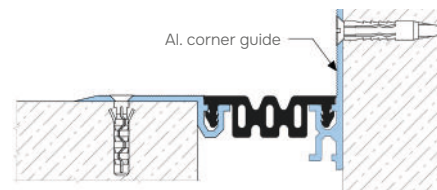
A – nominal joint width; M_x – horizontal movements;
B – visible width; M_y – vertical movements.
H – installation depth;

Profile	Sizes, mm			Movements, mm		Permissible loads (kN)
	A	B	H	M_x	M_y	
SV 24/24	24	105	12	4 (+2/-2)	4 (+2/-2)	pedestrian ²
SV 24/30	30	110	12	6 (+3/-3)	6 (+3/-3)	pedestrian ²
SV 24/35	35	115	12	10 (+5/-5)	10 (+5/-5)	pedestrian ²
SV 24/45	45	125	12	12 (+6/-6)	12 (+6/-6)	pedestrian ²
SV 24/50	50	130	12	16 (+8/-8)	16 (+8/-8)	pedestrian ²
SV 24/55	55	135	12	20 (+10/-10)	20 (+10/-10)	pedestrian ²
SV 24/70	70	150	12	24 (+10/-14)	24 (+12/-12)	pedestrian ²
SV 24/100	100	180	12	30 (+14/-16)	30 (+15/-15)	pedestrian ²

CORNER VERSION

The profiles have a corner version for floor-to-wall connection (joint along the wall). These profiles have an index:

- For external version "EE": SV-EE;
- For internal version "EI": SV-EI (only for joints with a width of 45 mm or more).



Example: SV-EE 24/30/9005

¹It is not recommended to use the profile in open sunlight and with possible large temperature fluctuations due to the large difference in the thermal expansion coefficients of concrete and aluminium.
²Automobile and other loads as agreed.

TECHNICAL DATA

FRAME

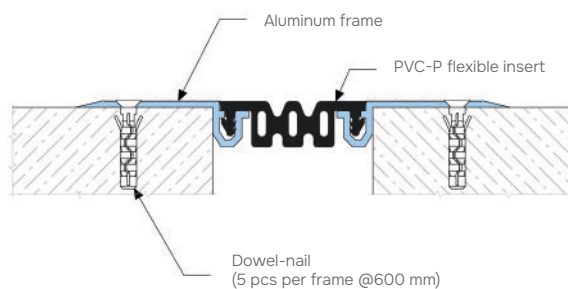
Material	Aluminum EN AW 6063 T6 (T66 ⁵)
Strength, MPa	$\sigma_b = 205$ (250 ⁵)
Tolerances	EN 12020-2:2008
Length, m	3,0
Tooling	Mounting holes
Surface coat	Mill finish (on request: anodized or powder coat)
Fasteners	Included (concrete screws RAWLPLUG R-LX-5x50-CS)

FLEXIBLE INSERT⁴

Material	PVC-P
Resistant	-30...+100 °C, UV+O ₃ – resistant
Length, m	20 meters per roll
Color ⁴	9005 7035 7037 1015

³ On request, the insert can be made in any RAL color (ask for details).
⁴ On request it is possible to manufacture inserts with other geometries (see "Non-standard insert types").
⁵ For EU market

EQUIPMENT PROFILE



LABELING

Non-standard insert type (marked if required – see "Non-Standard Insert types")

